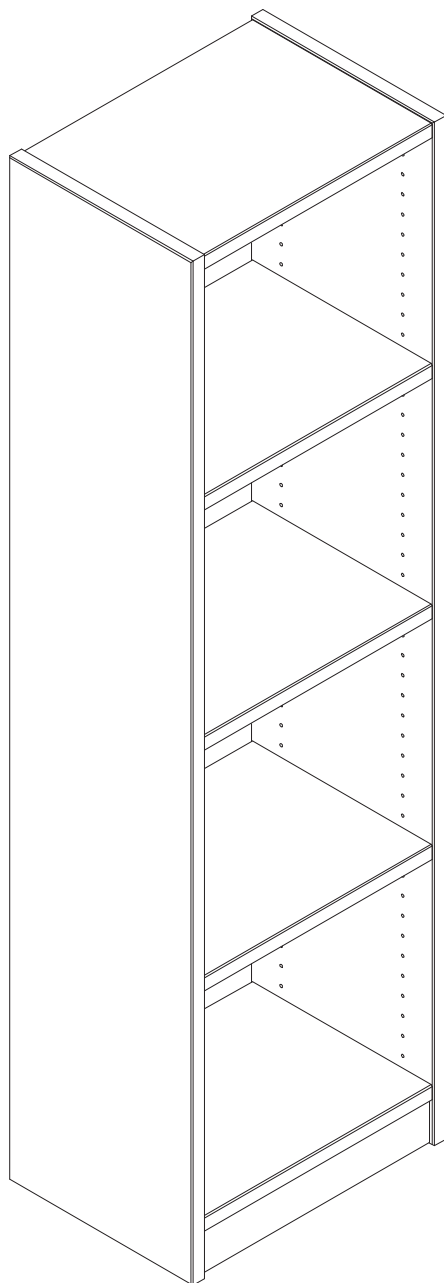
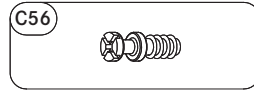
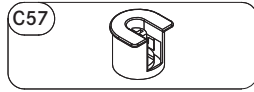
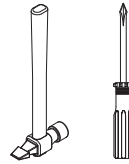
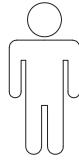
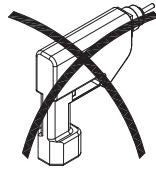
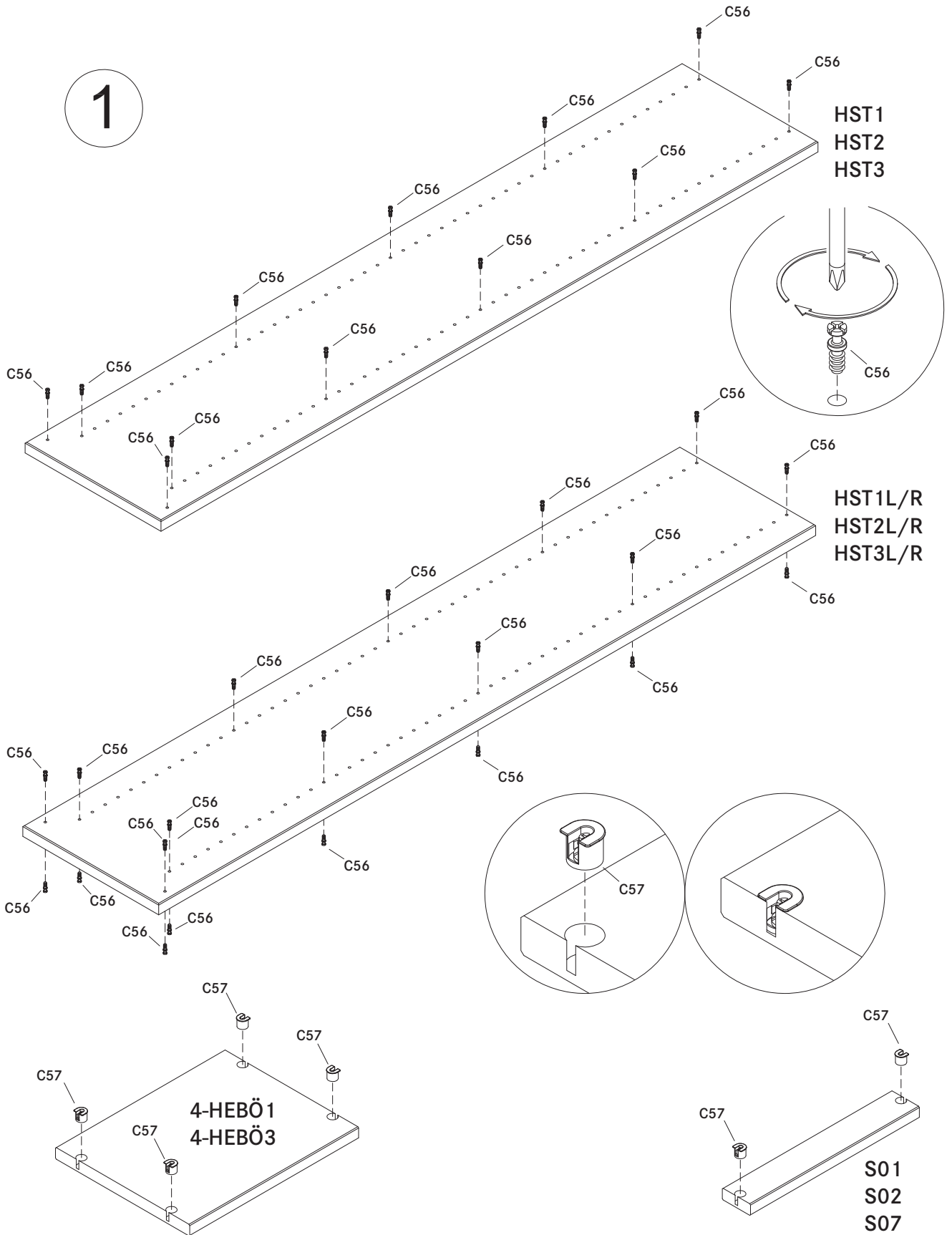


# Montage der Stollen und Regalböden





1



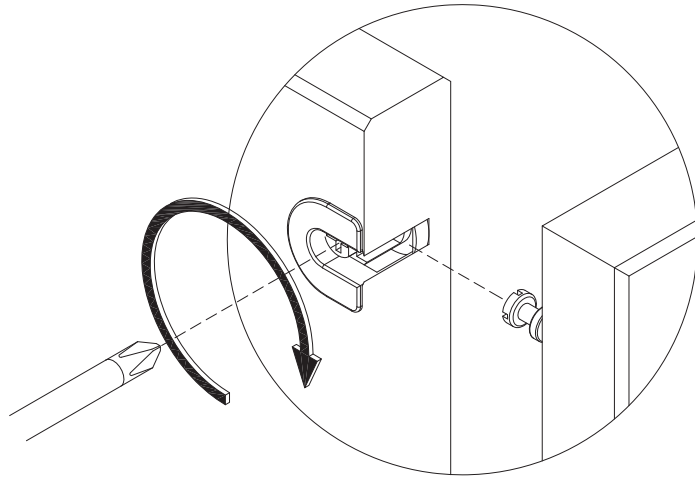
HST1  
HST2  
HST3

HST1L/R  
HST2L/R  
HST3L/R

4-HEBÖ1  
4-HEBÖ3

S01  
S02  
S03

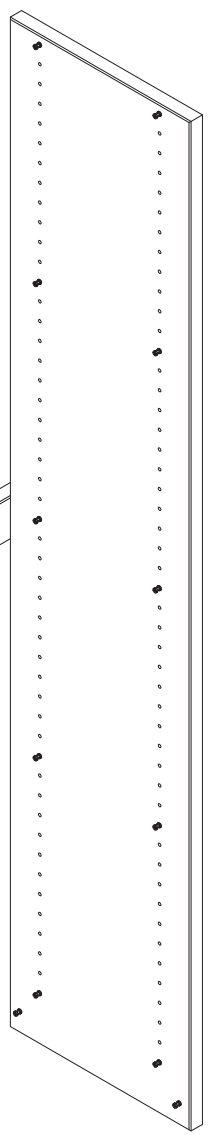
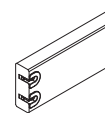
2



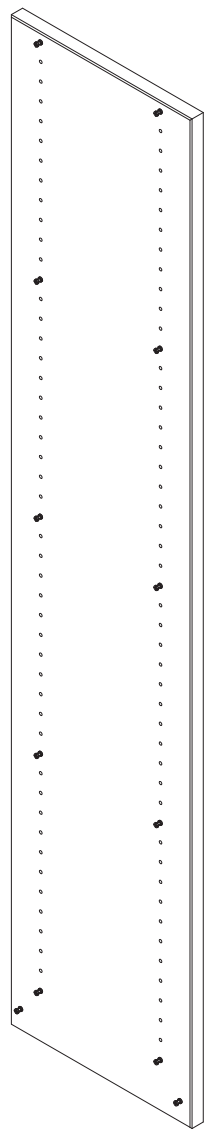
HST1L/R  
HST2L/R  
HST3L/R



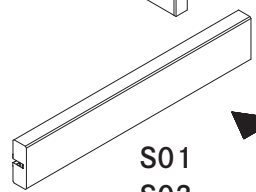
SL1  
SL2  
SL3



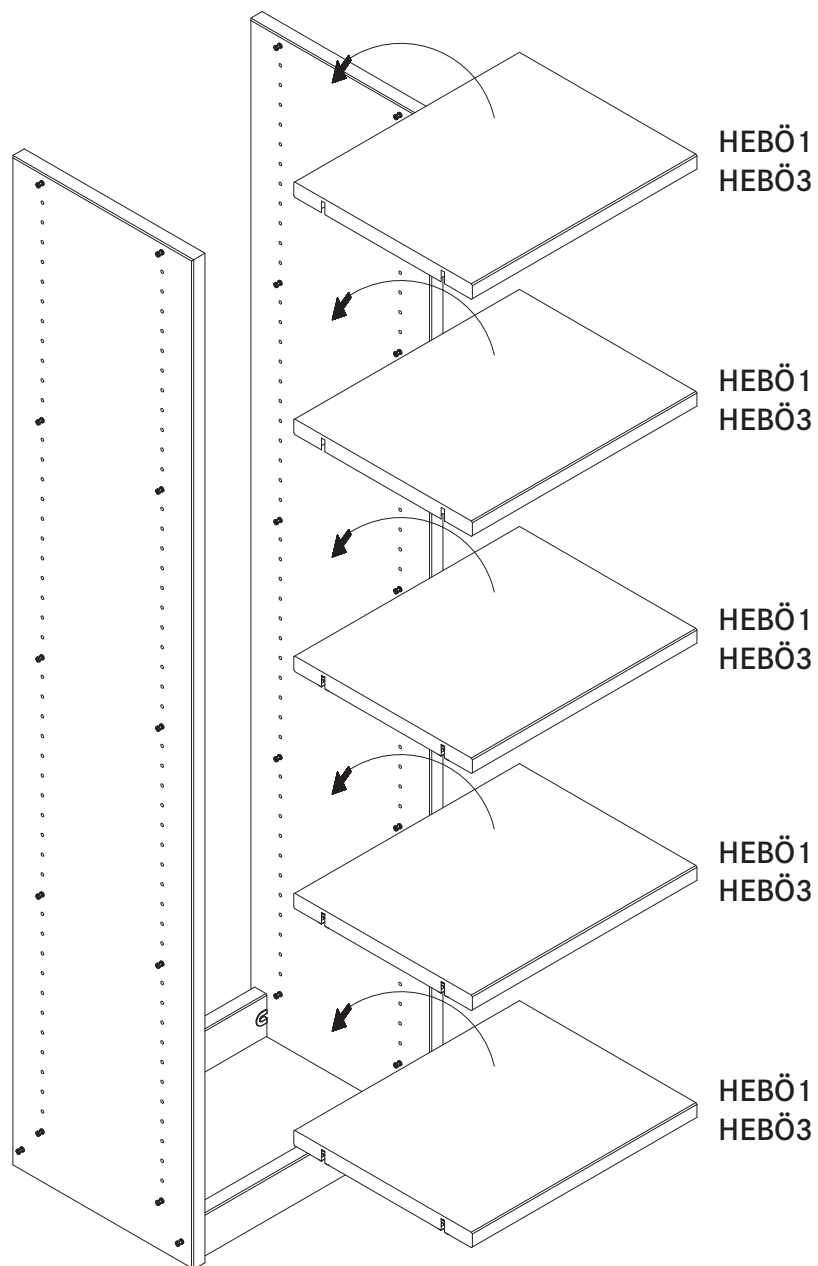
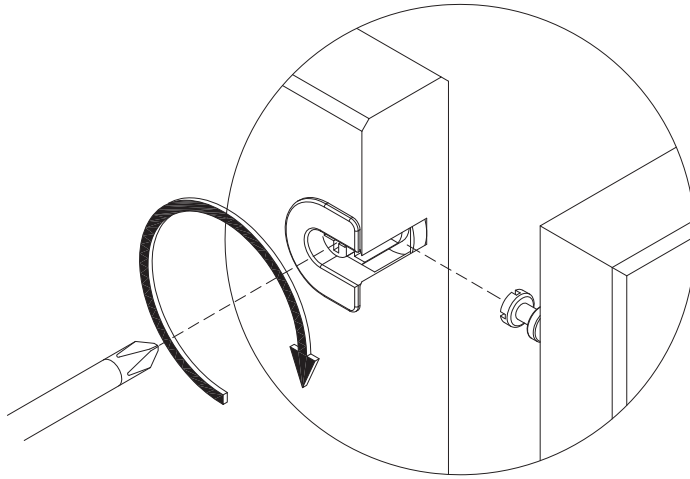
HST1L/R  
HST2L/R  
HST3L/R



S01  
S02  
S07



3



Die Eck-Elemente werden analog zu den geraden Elementen aufgebaut. Runde Sockel werden mit den gefederten Stiften „C4“ angebracht. Die prismenförmigen Eckstollen werden mit den Holzdübeln „C5“ zusammengesteckt. Bei der obersten kommt die Abdeckkappe „C6“ zum Einsatz. Werfen Sie auch einen Blick in die beigelegte allgemeine Aufbauanleitung, welche Sie aber auch herunterladen können.